



2026

COMPANY  
PROFILE

Welcome to  
QDING  
ELECTRICAL

# C O N T E N T S



## 01 COMPAN PROFILE

QDING ELECTRICAL is the leading manufacturer in diesel generator set and solution explorer in global power supply field.

## 02 PROJECT

Our products are currently being used in projects around the world

## 03 PRODUCT

We cover Cummins, Perkins, YUCHAIANGCHAI, WEICHAI brand engines



# QDING

## PART 01 Company Profile

QDING ELECTRICAL is the leading manufacturer in diesel generator set and solution explorer in global power supply field.





## COMPANY INTRODUCTION

Our company was established in 2013 and consist of four branches nationwide,as one of the leading OEM manufacturer of diesel generator in China with good reputation and awards for many years, to meet different request from different market in the world.

So far we have established closed and long cooperation with some world-class engine brand such as perkins, cummins, YUCHAI, WEICHAI and SHANGCHAI, what' s more, we are only one OEM manufacturer approved by FG Wilson in Hunan province, to meet better quality requested from customers,there are technical parameter of each QDING series for your reference.

01

# Our Team

Professional Diesel Generator Factory

Our team is a group of highly skilled and certified professionals specializing in the installation of diesel generator systems. With years of hands-on experience across various industries, we are committed to delivering seamless, efficient, and compliant installation services tailored to meet our clients' specific power needs.



Expert Technicians

End-to-End Service

Customized Solutions

Safety & Compliance

Quality Assurance

01

# WORKSHOP

This facility is where raw materials and advanced components are transformed into the reliable power solutions that our customers depend on.



## Overhead Cranes

For the safe and efficient movement of heavy engines and fully assembled units.



## Skilled Workforce

Our team of engineers, technicians, and electricians is highly trained and experienced



## 5S Methodology

Ensure a clean, organized, and safe working environment



## Quality Assurance

Automatic Control Testing Center before delivery

# Enable Production

## Quality

## Safety

# WORKSHOP SHOW

- Production area
- Tooling room
- Spare parts area



# WORKSHOP SHOW



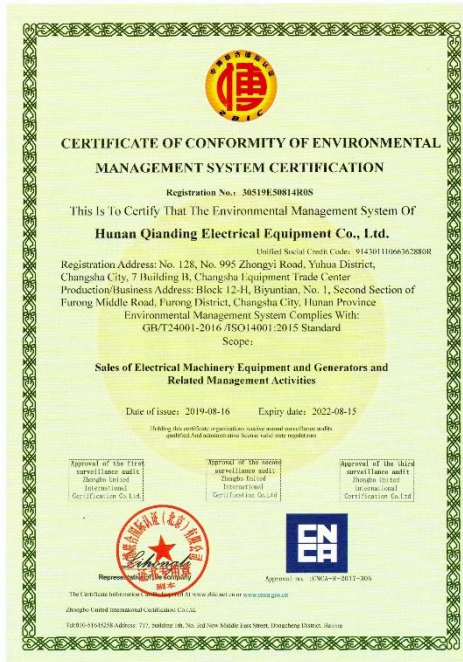
**Storage area to be sent on requested**

# Automatic Control Testing Center before delivery

## Stable Quality Assurance



# Corporate Honor



## CHINA FAMOUS BRAND

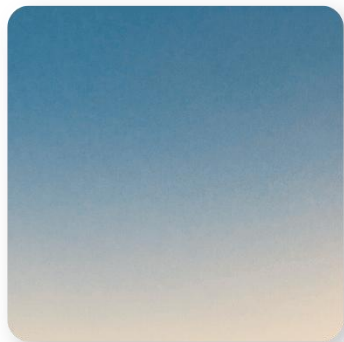
## More than 30 Patents



# Award wall



Approved and praised by  
our customers, engine  
partners and Chinese  
government.....

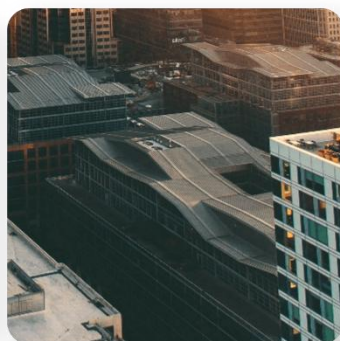
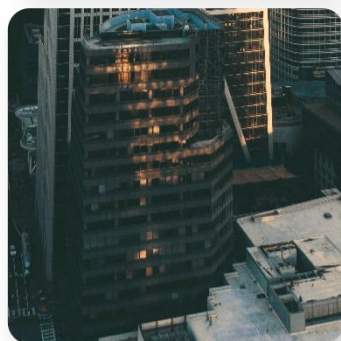


# TWO

PART 02

## Project

Our products are currently being used in projects around the world



02

# Overseas Project

01

## Sudan Port Project

Equipment power: 30KW/500KW

Purchase quantity: Five units in total



02

## Madagascar Ranoumafana Hydropower Station

Equipment power: 300KW

Purchase quantity: Six units in total

03

## Emirates Aluminium Company Jebel Ali

Equipment power: 30KW-500KW

Purchase quantity: Eight units in total





Equipment power: 30KW/500KW

Purchase quantity: Five units in total

Export country: Mozambique, Africa

Equipment power: 500KW

Purchase quantity: Five units in total

Exporting country: Thailand, Asia



Equipment power: 50KW/80KW

Purchase quantity: Three units in total

Export country: Congo, Africa

Equipment power: 500-1800KW

Purchase quantity: A total of twenty units

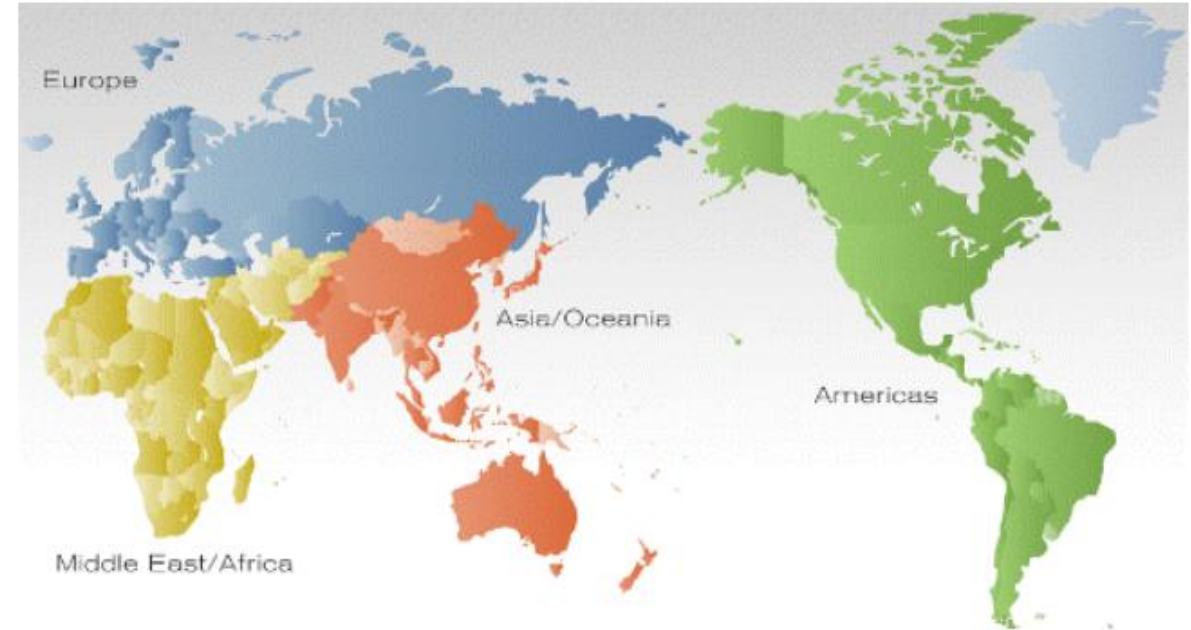
Export country: Zimbabwe, Africa

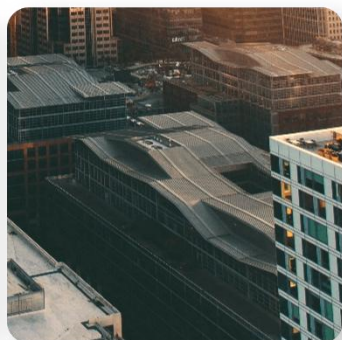
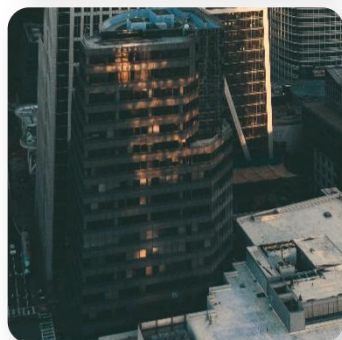
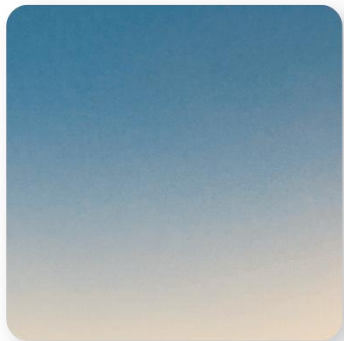
# APPLICATION

All of which are widely used in various applications of business buildings, industrial plants, municipal projects, power stations, universities, hotels, hospitals and so on.



# After-sales SERVICE





# THREE

## PART 03

# Product

We cover Cummins, Perkins, YUCHAIANGCHAI, WEICHAI brand engines



02

# Product Showcase

Diesel Generator product series



# QDING-P Series



## QDING Series Generator Sets

The coupled alternator is offered by QDING, STAMFORD, ABB, MARATHON brushless generator, which adopts integral salient pole rotor technique, Class H insulation, and steel sheet body, guaranteeing its advanced performance, steady and reliable operation.

The engine is offered by world-class Perkins (UK) with quick and reliable cold start performance, it adopts advanced technologies for optimizing combustion process, to low down fuel consumption and noise, also it's energy-saving and friendly environment.

Our controller applies multi-functional control system, it has Chinese and English operating interface with automatic/manual control function.

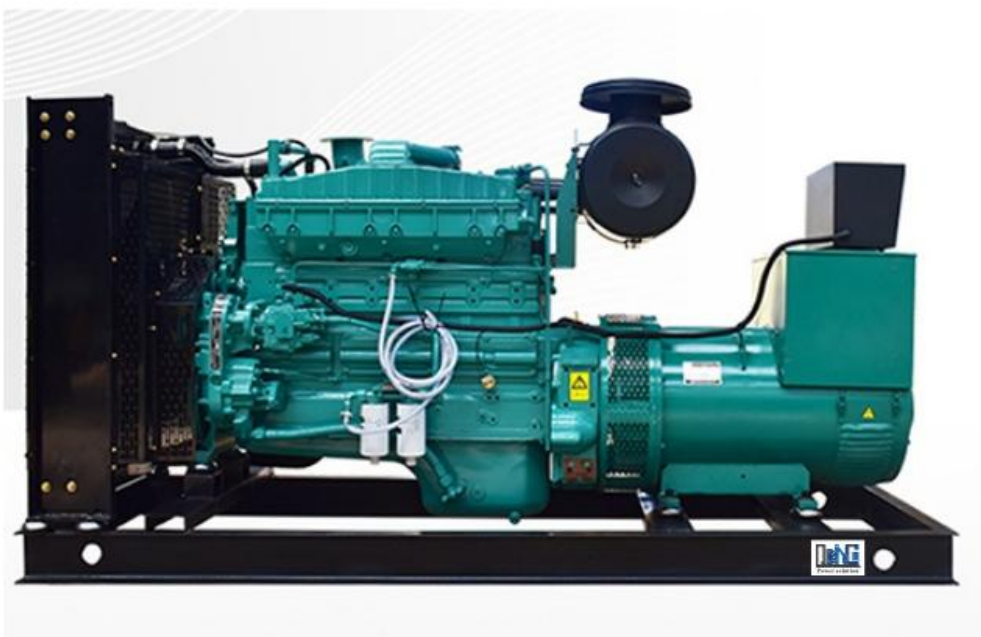
Prime Power range: 30~2250KVA

### Normal condition:

- Ambient temp: 40°C
- Altitude: 1000M
- Relative humidity: 60%

Main Technical Parameter					Perkins Engine Series					50HZ	
Genset Model	PRP(KVA)/KW	ESP(KVA)/KW	Current(A)	Fuel rate	Engine Model	Cylinder(L)	Broe/Stroke	Lubricant volume	Max KW	LxWxH(mm)	Weight
QDING-24P	30/24	33/26	43.2	7.1	1103A-33G	3	105*127	8.3	30.4	1780*750*1480	790
QDING-36P	45/36	50/40	64.8	10.7	1103A-33TG1	3	105*127	8.3	46.5	1850*750*1480	910
QDING-48P	60/48	65/52	86.4	13.9	1103A-33TG2	3	105*127	8.3	60.5	1950*750*1530	940
QDING-52P	65/52	72/58	93.6	14.8	1104A-44TG1	4	105*127	8	65.6	2220*750*1530	1060
QDING-64P	80/64	87/70	115.2	18.7	1104C-44TAG1	4	105*127	8	82.5	2220*750*1530	1100
QDING-80P	100/80	110/88	144	22.6	1104C-44TAG2	4	105*127	8	103	2220*750*1530	1060
QDING-100P	125/100	137/110	180	29.9	1106A-70TG1	6	105*135	16.5	137	2620*770*1570	1420
QDING-120P	150/120	165/132	216	45.8	1106A-70TAG2	6	105*135	16.5	153.6	2800*790*1650	1700
QDING-144P	180/144	200/160	259.2	41.6	1106A-70TAG3	6	105*135	16.5	179.8	2800*790*1650	1750
QDING-160P	200/160	220/176	288	45.8	1106A-70TAG4	6	105*135	16.5	196.3	2800*790*1650	1800
QDING-170P	212/170	233/187	306	44.6	1506A-E88TAG1	6	112*149	41	210	2650*1050*1780	2300
QDING-180P	225/180	250/200	324	48.6	1506A-E88TAG2	6	112*149	41	236	2650*1050*1780	2400
QDING-200P	250/200	275/220	360	55.5	1506A-E88TAG3	6	112*149	41	258	2650*1050*1780	2400
QDING-230P	287/230	316/253	414	60.2	1506A-E88TAG4	6	112*149	41	281	2800*1100*1800	2600
QDING-250P	312/250	343/275	450	64.9	1506A-E88TAG5	6	112*149	41	307	2800*1100*1800	2700
QDING-280P	350/280	400/320	504	75	2206C-E13TAG2	6	130*157	40	368	3250*1230*2010	3200
QDING-320P	400/320	450/360	576	85	2206C-E13TAG3	6	130*157	40	413	3250*1230*2010	3300
QDING-360P	450/360	500/400	648	99	2506C-E15TAG1	6	137*171	62	451	3480*1280*2010	3640
QDING-400P	500/400	550/440	720	106	2506C-E15TAG2	6	137*171	62	495	3480*1280*2010	3640
QDING-480P	600/480	660/528	864	129	2806C-E18TAG1A	6	145*183	62	628	3430*1570*2090	4390
QDING-520P	650/520	715/572	936	132	2806C-E18TAG2	6	145*183	62	628	3430*1570*2090	4540
QDING-600P	750/600	825/660	1080	157	4006-23TAG2A	6	160*190	113.4	717	4320*1760*2200	6130
QDING-640P	800/640	880/704	1152	172	4006-23TAG3A	6	160*190	113.4	786	4320*1760*2200	6130
QDING-720P	900/720	1000/800	1296	195	4008TAG1A	8	160*190	143	882	4700*2090*2280	8650
QDING-800P	1000/800	1125/900	1440	220	4008TAG2A	8	160*190	153	985	4700*2090*2280	8650
QDING-900P	1125/900	1250/1000	1620	243	4008-30TAG3	8	160*190	162	997	4700*2090*2280	8650
QDING-1000P	1250/1000	1375/1100	1800	259	4012-46TWG2A	12	160*190	177	1224	4850*2050*2500	8930
QDING-1100P	1375/1100	1500/1200	1980	283	4012-46TWG3A	12	160*190	177	1321	4900*2100*2500	9120
QDING-1200P	1500/1200	1650/1320	2160	328	4012-46TAG2A	12	160*190	177	1459	5000*2230*2410	9460
QDING-1368P	1710/1368	1875/1500	2430	380.6	4012-46TAG3A	12	160*190	177	1496	5090*2230*2530	10200
QDING-1480P	1750/1400	2000/1600	2664	383	4016TAG1A	16	160*190	214	1741	6000*2200*2560	12300
QDING-1640P	2000/1600	2250/1800	2952	434	4016TAG2A	16	160*190	214	1937	6000*2200*2560	12500
QDING-1800P	2250/1800	2500/2000	3240	473	4016-61TRG3	16	160*190	214	2183	6060*2230*2700	13300

# QDING-C Series



## QDING Series Generator Sets

The coupled alternator is offered by QDING, STAMFORD, ABB, MARATHON brushless generator, which adopts integral salient pole rotor technique, Class H insulation, and steel sheet body, guaranteeing its advanced performance, steady and reliable operation.

The engine is offered by world-class Cummins (US), which has advanced technologies with super quality and reliable performance..

Our controller applies multi-functional control system, it has Chinese and English operating interface with automatic/manual control function.

Prime Power range: 250-1500KVA

### Normal condition:

- Ambient temp: 40°C
- Altitude: 1000M
- Relative humidity: 60%

Main Technical Parameter					Cummins Engine Series					50HZ	
Genset Model	PRP(KVA)/KW	ESP(KVA)/KW	Current(A)	Fuel rate	Engine Model	Cylinder(L)	Broe/Stroke	Lubricant volume	Max KW	LxWxH(m/m)	Weight
QDING-200CC	250/200	275/220	360	58.4	NTA855-GA	6	140*152	38.6	254	2950*1200*1750	3010
QDING-220CC	275/220	312/250	396	61	NTA855-G1A	6	140*152	38.6	291	3050*1200*1740	3260
QDING-250CC	312/250	350/280	450	63	MTAA11-G3	6	125*147	39	310	3050*1200*1690	3350
QDING-275CC	343/275	375/300	495	72	NTA855-G2A	6	140*152	38.6	343	3050*1200*1740	3350
QDING-280CC	350/280	387/310	504	75	NTA855-G4	6	140*152	38.6	351	3050*1200*1740	3360
QDING-300CC	375/300	412/330	540	86	NTAA855-G7	6	140*152	38.6	377	3250*1230*1800	3360
QDING-330CC	412/330	450/360	594	89	NTAA855-G7A	6	140*152	38.6	406	3250*1230*1800	3490
QDING-360CC	450/360	500/400	648	97	KTA19-G3	6	159*159	50	448	3380*1390*2050	4170
QDING-400CC	500/400	562/450	720	107	KTA19-G3A	6	159*159	50	504	3380*1390*2050	4170
QDING-420CC	525/420	631/505	756	113	KTAA19-G5	6	159*159	50	555	3670*1680*2190	4650
QDING-460CC	575/460	650/520	828	118.5	KTAA19-G6	6	159*159	50	570	3670*1680*2190	4660
QDING-480CC	600/480	650/520	864	139	KTA19-G8	6	159*159	50	575	3380*1390*2050	5370
QDING-500CC	625/500	687/550	900	127.8	KTAA19-G6A	6	159*159	50	610	3720*1680*2190	4810
QDING-500CC	625/500	687/550	900	127.8	KTAA19-G7	6	159*159	50	610	3720*1680*2190	4810
QDING-520CC	650/520	712/570	936	143	QSKTAA19G3	6	159*159	84.4	634	3620*1720*2320	4910
QDING-570CC	712/570	787/630	1026	152	KT38-G1	12	159*159	113	701	4410*1720*2170	7190
QDING-580CC	725/580	800/640	1044	157	KT38-GA	12	159*159	113	711	4410*1720*2170	7190
QDING-600CC	750/600	825/660	1080	167	KTA38-G2	12	159*159	135	731	4410*1720*2170	7190
QDING-640CC	800/640	887/710	1152	170	KTA38-G2B	12	159*159	135	790	4410*1720*2170	7200
QDING-728CC	910/728	1000/800	1310.4	191	KTA38-G2A	12	159*159	135	895	4410*1720*2170	7360
QDING-800CC	1000/800	1100/880	1440	209	KTA38-G5	12	159*159	135	970	4300*2080*2190	7780
QDING-900CC	1125/900	1250/1000	1620	251	KTA38-G9	12	159*159	129	1090	4400*2080*2190	8160
QDING-1000CC	1250/1000	1375/1100	1800	254	KTA50G3	16	159*159	177	1227	5000*2080*2290	9280
QDING-1000CC	1250/1000	1375/1100	1800	274	QSK38-G5	16	159*159	170	1224	4650*2160*2440	8550
QDING-1100CC	1375/1100	1650/1320	1980	289	KTA50-G8	16	159*159	204	1429	4960*2200*2620	10370
QDING-1200CC	1500/1200	1650/1320	2160	289	KTA50-GS8	16	159*159	204	1429	5170*2120*2360	10760

# QDING-V Series



## QDING Series Generator Sets

The coupled alternator is offered by QDING, STAMFORD, ABB, MARATHON brushless generator, which adopts integral salient pole rotor technique, Class H insulation, and steel sheet body, guaranteeing its advanced performance, steady and reliable operation.

The engine is offered by world-class VOLVO (Sweden) with quick and reliable cold start performance, it adopts advanced technologies for optimizing combustion process, to low down fuel consumption and noise, also it's energy-saving and friendly environment, and the emission index meets EU stage-3 standard.

Our controller applies multi-functional control system, it has Chinese and English operating interface with automatic/manual control function.

Prime Power range: 101~650KVA

### Normal condition:

- Ambient temp: 40°C
- Altitude: 1000M
- Relative humidity: 60%

Main Technical Parameter					Volvo Engine Series						50HZ
Genset Model	PRP(KVA)/KW	ESP(KVA)/KW	Current(A)	Fuel rate	Engine Model	Cylinder(L)	Broe/Stroke	Lubricant volume	Max KW	LxWxH(mm)	Weight
QDING-81V	101/81	111/89	146	21	TAD551GE	4	108*130	21	98	2450*930*1720	1230
QDING-105V	131/105	143/115	189	26	TAD750GE	6	108*130	23	127	2470*950*1720	1320
QDING-122V	152/122	167/134	220	31	TAD751GE	6	108*130	23	145	2780*1090*1770	1750
QDING-144V	180/144	197/158	259	38	TAD752GE	6	108*130	34	174	2950*1120*1770	1820
QDING-160V	200/160	220/176	288	41	TAD753GE	6	108*130	34	191	2950*1120*1770	1880
QDING-200V	250/200	275/220	360	48	TAD754GE	6	108*130	34	239	2950*1120*1770	1980
QDING-259V	323/259	356/285	466	60	TAD1351GE	6	131*158	36	306	3270*1150*1880	3280
QDING-292V	365/292	401/321	526	69	TAD1352GE	6	131*158	36	345	3350*1150*1910	3400
QDING-305V	381/305	418/335	549	76	TAD1354GE	6	131*158	36	361	3350*1150*1910	3450
QDING-330V	412/330	453/363	594	83	TAD1355GE	6	131*158	36	390	3350*1150*1910	3580
QDING-370V	462/370	508/407	666	89	TAD1650GE	6	144*165	48	433	3660*1200*2110	3640
QDING-404V	505/404	555/444	727	95	TAD1651GE	6	144*165	48	473	3660*1200*2110	3710
QDING-480V	600/480	660/528	864	110	TAD1652GE	6	144*165	48	557	3660*1200*2110	3860
QDING-520V	650/520	715/572	936	118	TAD1653GE	6	144*165	48	603	3760*1400*2150	4240

# QDING-M Series



## QDING Series Generator Sets

The coupled alternator is offered by QDING, STAMFORD, ABB, MARATHON brushless generator, which adopts integral salient pole rotor technique, Class H insulation, and steel sheet body, guaranteeing its advanced performance, steady and reliable operation.

The engine is offered by world-class MTU (Germany), which adopts fuel common rail technique and digital ADEC electric managing system, it has long overhaul period, and its emission index meets German TALUFT standard, it's energy-saving and friendly environmental.

Our controller applies multi-functional control system, it has Chinese and English operating interface with automatic/manual control function.

Prime Power range: 775~2550KVA

### Normal condition:

- Ambient temp: 40°C
- Altitude: 1000M
- Relative humidity: 60%

Main Technical Parameter			MTU Engine Series							50HZ
Genset Model	PRP(KVA)/KW	Current	Engine Model	Cylinder(L)	Broe/Stroke	Lubricant volume	Max KW	LxWxH(mm)	Weight	
QDING-M620	775/620	1116	MTU/12V2000G65	12	130*150	77	765	4200*1650*2280	7000	
QDING-M730	912.5/730	1314	MTU/16V2000G25	16	130*150	102	891	4500*2000*2300	7850	
QDING-M800	1000/800	1440	MTU/12V2000G65	16	130*150	102	979	4500*2000*2300	7850	
QDING-M910	1137.5/910	1638	MTU/18V2000G65	18	130*150	130	1100	4750*2000*2380	9000	
QDING-M1100	1375/1100	1980	MTU/12V4000G23R	12	170*210	260	1205	6150*2150*2400	12000	
QDING-M1320	1650/1320	2376	MTU/12V4000G23	12	170*210	260	1562	6150*2150*2400	13000	
QDING-M1470	1837.5/1470	2646	MTU/12V4000G63	12	170*210	260	1750	6150*2150*2400	14000	
QDING-M1830	2287.5/1830	3006	MTU/16V4000G63	16	170*210	300	1978	6550*2600*2500	17600	
QDING-M2040	2550/2040	3672	MTU/20V4000G23	20	170*210	390	2420	8300*2950*2550	24000	

# QDING-Y Series



## QDING Series Generator Sets

The coupled alternator is offered by QDING, STAMFORD, ABB, MARATHON brushless generator, which adopts integral salient pole rotor technique, Class H insulation, and steel sheet body, guaranteeing its advanced performance, steady and reliable operation.

The engine is offered by China famous engine Yuchai, it adopts advanced technologies for optimizing combustion process, to low down fuel consumption and noise.

Our controller applies multi-functional control system, it has Chinese and English operating interface with automatic/manual control function.

Prime Power range: 20~1875KVA

### Normal condition:

- Ambient temp: 40°C
- Altitude: 1000M
- Relative humidity: 60%

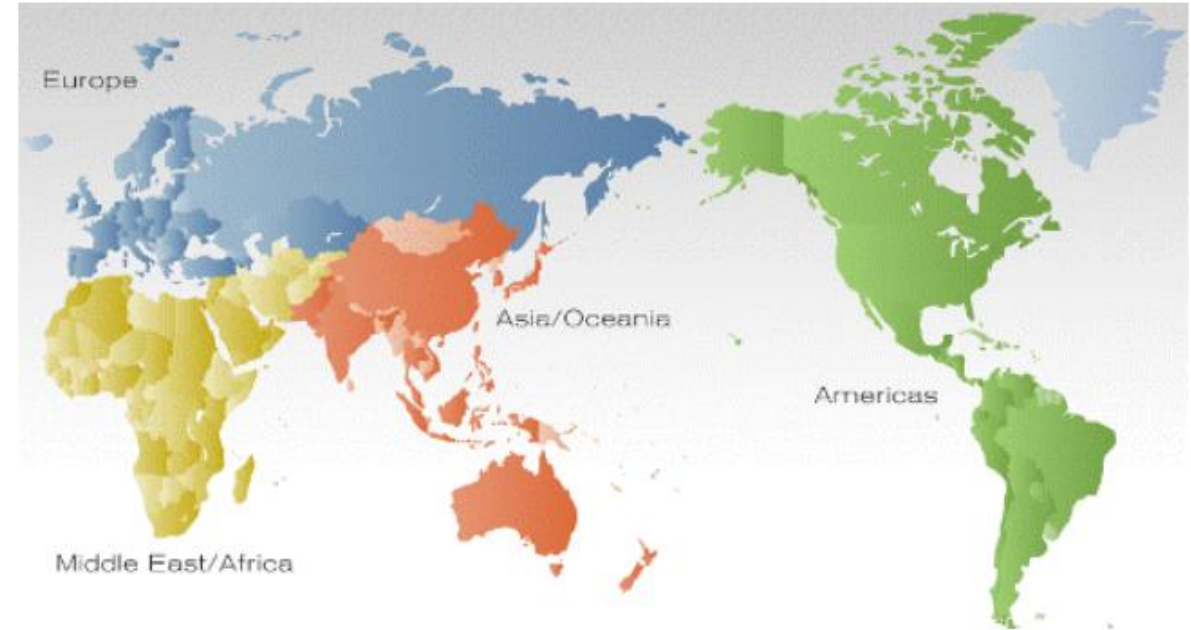
Main Technical Parameter					Yuchai Engine Series					50HZ	
Genset Model	PRP(KVA)/KW	ESP(KVA)/KW	Current(A)	Fuel rate	Gine Model	Cylinder(L)	Broe/Stroke	Lubricant volume	Max KW	LxWxH(mm)	Weight
QDING-16YC	20/16	22/18	29	4.2	YC4FA35-D20	4	96*103	8	23	1600*650*1080	800
QDING-20YC	25/20	30/24	36	5.2	YC4FA40Z-D20	4	96*103	8	30.8	1600*650*1080	800
QDING-30YC	37/30	40/32	54	7.8	YC4F55Z-D20	4	96*103	8	40.5	1600*650*1080	800
QDING-32YC	40/32	43/35	58	8	YC4D60-D21	4	108*115	11	44	1800*750*1100	900
QDING-40YC	50/40	56/45	72	10.2	YC4FA75L-D20	4	96*103	8	55	1700*700*1080	850
QDING-45YC	56/45	62/50	81	11	YC4D85Z-D20	4	108*115	13	60.5	1850*750*1250	1050
QDING-50YC	62/50	68/55	90	12	YC4D90Z-D21	4	108*115	13	66	1850*750*1250	1050
QDING-60YC	75/60	80/64	108	14.5	YC4A100Z-D20	4	108*132	13	73.5	1900*750*1250	1150
QDING-80YC	100/80	112/90	144	19.6	YC6B135Z-D20	6	105*125	14	99	2300*850*1400	1500
QDING-90YC	112/90	125/100	162	21.8	YC6B155L-D21	6	105*125	14	113	2350*1000*1600	1550
QDING-100YC	125/100	150/120	180	24.2	YC6B1180L-D20	6	105*125	17	132	2400*1000*1600	1600
QDING-120YC	150/120	162/130	216	29	YC6B205L-D20	6	108*132	17	152	2600*1000*1700	1700
QDING-140YC	175/140	187/150	252	32.6	YC6A230L-D20	6	108*132	22	170.5	2600*1000*1700	1750
QDING-150YC	187/150	200/160	270	35.5	YC6G245L-D20	6	112*132	25	181.5	2900*1000*1750	1950
QDING-200YC	250/200	275/220	360	47.3	YC6MK350L-D20	6	123*145	28	258.5	3010*1100*1820	2300
QDING-250YC	312/250	350/280	450	59	YC6MK420L-D20	6	123*145	28	309	3010*1100*1820	2350
QDING-280YC	350/280	400/320	504	66.2	YC6MJ480L-D20	6	131*145	28	352	3010*1100*1820	2400
QDING-320YC	400/320	437/350	576	75.6	YC6T550L-D21	6	145*165	52	405	3550*1100*1820	3200
QDING-360YC	450/360	500/400	648	85	YC6T600L-D22	6	145*165	52	441	3600*1250*1960	3450
QDING-400YC	500/400	550/440	720	94.5	YC6T600L-D20	6	145*165	52	485	3600*1250*1960	3470
QDING-420YC	525/420	577/462	756	99.3	YC6T700L-D20	6	145*165	52	515	3600*1250*1960	3510
QDING-450YC	562/450	625/500	810	106.4	YC6TD780L-D20	6	152*180	52	572	3600*1250*1960	3550
QDING-500YC	625/500	687/550	900	118	YC6TD840L-D20	6	152*180	52	616	3600*1250*1960	3700
QDING-600YC	750/600	875/700	1080	142	YC6C1020L-D20	6	200*210	180	748	4390*1500*2300	7500
QDING-650YC	812/650	887/710	1170	153.6	YC6C1070L-D20	6	200*210	180	787	4390*1500*2300	7600
QDING-730YC	912/730	1000/800	1314	172.5	YC6C1220L-D20	6	200*210	180	897	4500*1600*2500	7680
QDING-800YC	1000/800	1125/900	1440	189	YC6C1320L-D20	6	200*210	180	968	4500*1600*2500	7800
QDING-900YC	1125/900	1250/1000	1620	212.7	YC6C1520L-D20	6	200*210	180	1160	4500*1600*2500	7990
QDING-1000YC	1250/1000	1375/1100	1800	236.4	YC12VC1680L-D20	12	200*210	280	1230	5500*2350*2700	11140
QDING-1200YC	1500/1200	1700/1360	2160	283.6	YC12VC2070L-D20	12	200*210	280	1520	5500*2350*2700	11500
QDING-1360YC	1700/1360	1875/1500	2448	321.5	YC12VC2270L-D20	12	200*210	280	1670	5500*2350*2700	11650
QDING-1500YC	1875/1500	2000/1600	2700	354.5	YC12VC2510L-D20	12	200*210	280	1850	5500*2350*2700	12200

# APPLICATION

All of which are widely used in various applications of business buildings, industrial plants, municipal projects, power stations, universities, hotels, hospitals and so on.



# After-sales SERVICE

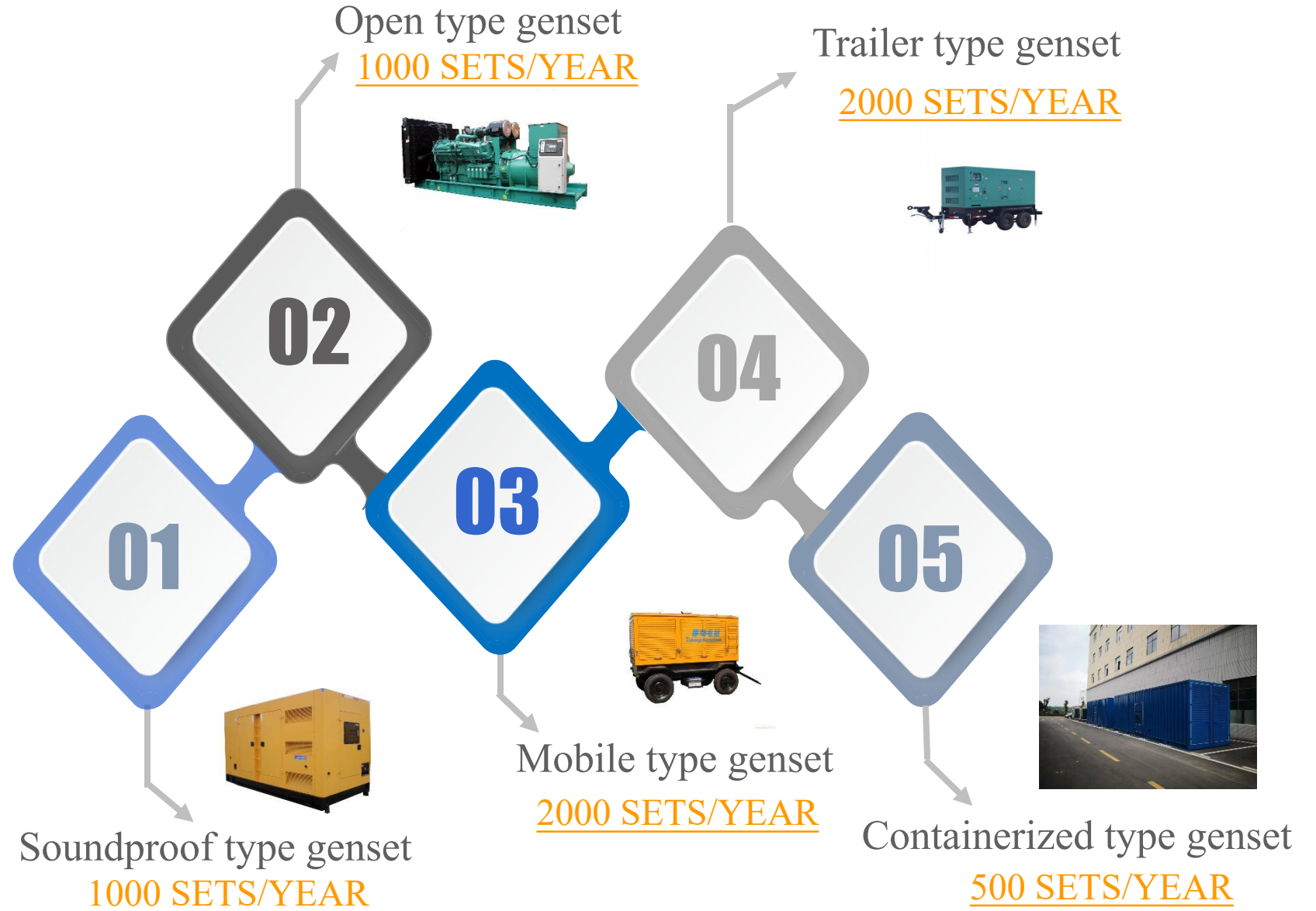


# WHAT CAN WE PROVIDE ?

## Stable quality products

- ✓ Branded engine
- ✓ Manufacturing experience
- ✓ Professional team
- ✓ Automatic testing

One-Step Solution Services



# Packing & delivery

- Packing : plastic film or fumigation wooden frame with bottom frame in container



- Delivery



# Overseas Market



## In the further,

We will go on develop markets: Europe, USA, UK, Germany, Africa .....

## Till now,

Thailand, Vietnam, Malaysia,  
Myanmar, Pakistan, Saudi Arabia,  
Turkey, Yemen, Tajikistan, Australia,  
Iran, The United Arab Emirates, Sri  
Lanka, India, Korea Bangladesh,  
Tanzania, Indonesia, Sudan..

**And** the recent annual growth rate :  
**more than 100%**



2026

COMPANY

Thank You

